

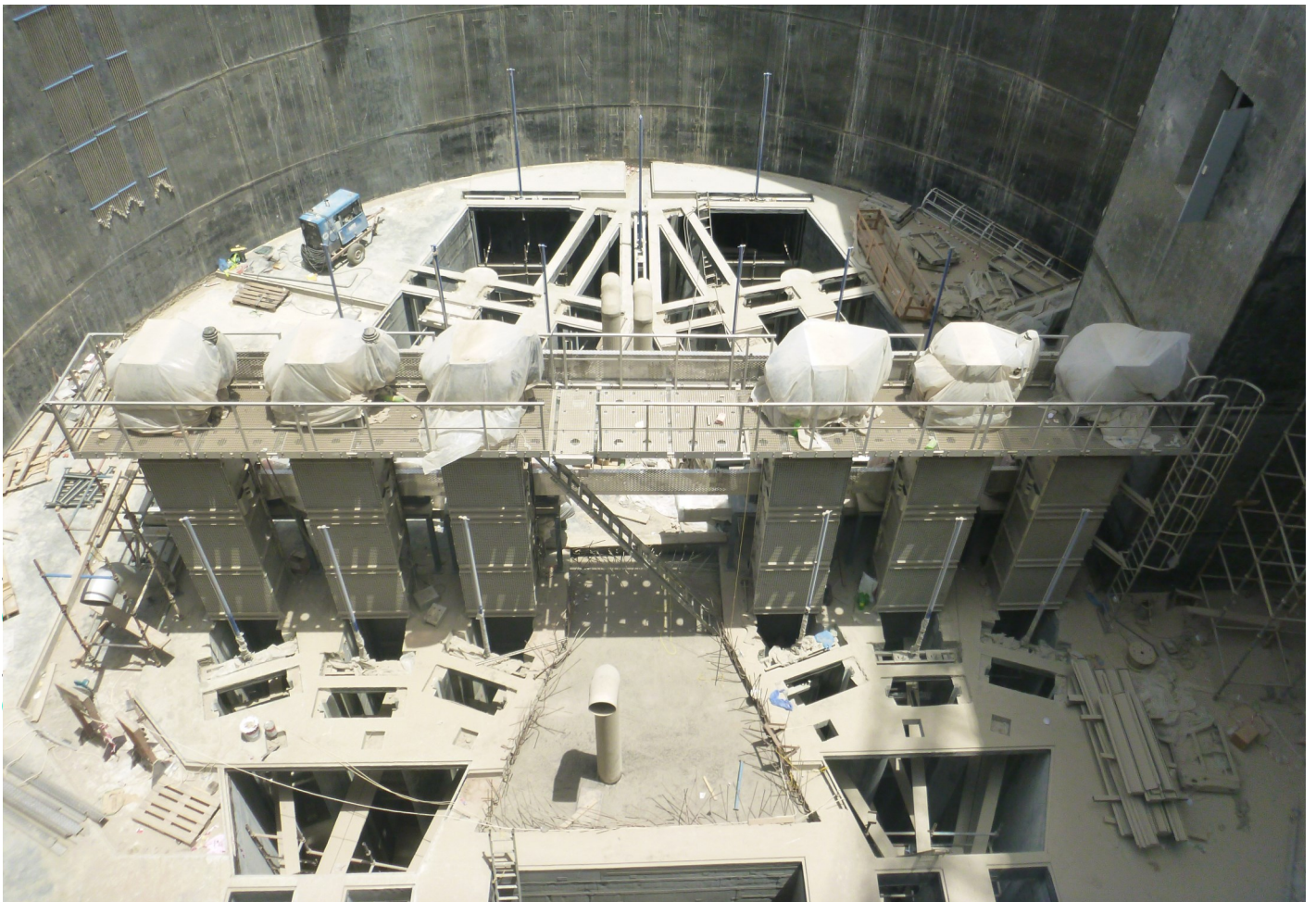


A brand of
Aqseptence Group

Passavant® Deep Pumping Station South Jeddah, KSA

Situation

In the years 2012-2014 the construction of one of the largest deep pumping stations in Saudi Arabia in South Jeddah was scheduled. The two shafts have a diameter of 32 m and a depth of 40 m. In order to be able to remove the existing solids and debris in the wastewater, the pumping station requires a screening system for mechanical pre-treatment. In addition, a variety of shut-off devices are required to retain the wastewater. The existing product portfolio of the Aqseptence Group fits perfectly to the existing task and the requirements of the deep pumping station in South Jeddah.



Customer

Abuljadayel Co.

End Customer

NWC (Jeddah)

Commissioning

2014

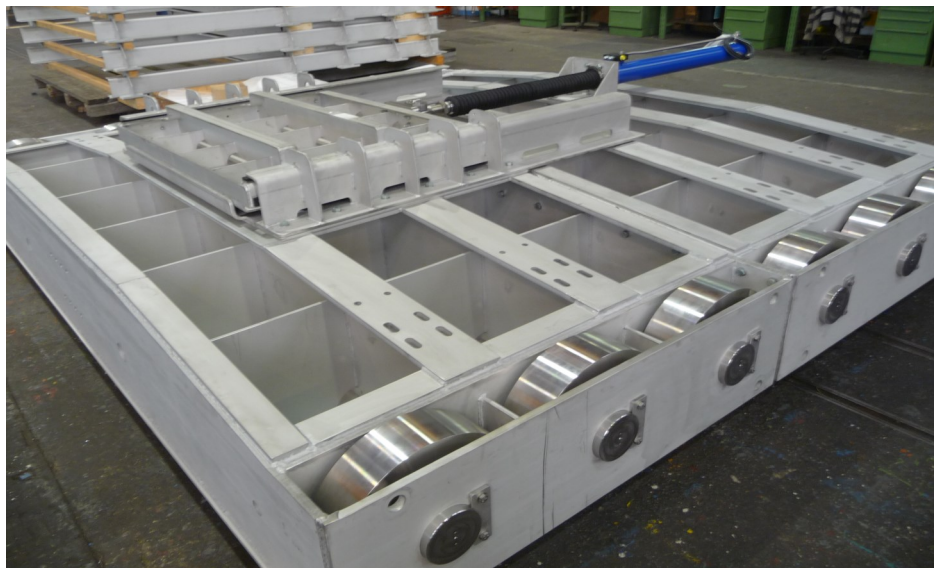
Advantages

Passavant® COB-C

- Rugged design
- High cleaning capacity
- Reliable grabbing of bulky screenings
- Economic functioning
- Equipped with liftable bar rack, so that the channel can be completely cleared

Passavant® Shut-Off devices

- Stable and sustainable construction suitable for highest pressures
 - Roller penstock to minimize friction and ensure smooth running
 - Roller penstock equipped with a balancing valve / penstock, in order to be able to equalize the pressure
 - Actuators with EX-protection version, suitable for usage in explosive environments
-



Solution

For the new deep pumping station in South Jeddah, Aqseptence Group supplied a comprehensive package of shut-off devices consisting of a Passavant® Roller Penstock, 34 Passavant® Sluice Gates and 12 Passavant® Stop Plates, as well as 6 Passavant® Cable operated Bar Screens. The delivery package of the Aqseptence Group is an important component and basic requirement for the functionality of the deep pumping station. Over a period of years, the Aqseptence Group supplied and installed the products, thus laying the foundation stone for the new pumping station in South Jeddah.

Technical Details

Passavant® COB-C

Channel width:	1.2 m
Grate height:	3,6 m
Gap width:	50 mm
Discharge height:	3039 mm
Installation angle:	90°
Material:	1.4404
Design:	Compact

Passavant® Roller Penstock

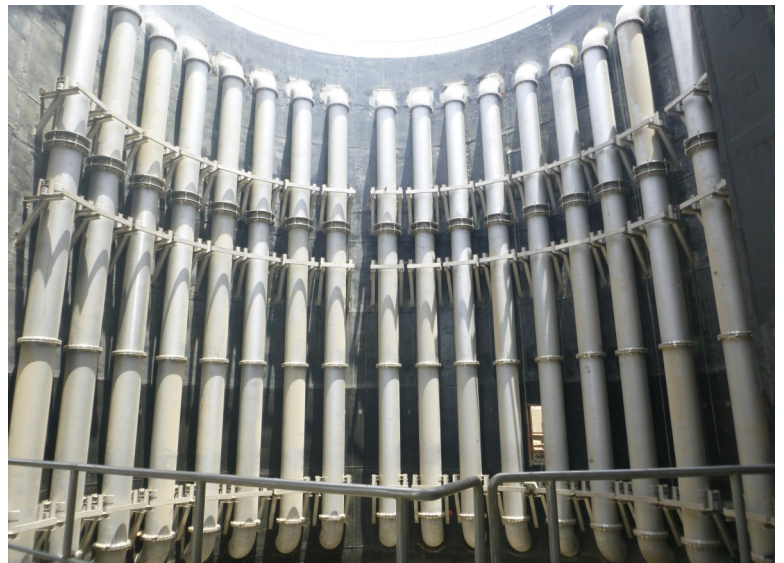
Opening dimensions W x H:	3000 x 3000 mm
Pressure (on- /off-seating):	0.0 / 3.0 bar
Channel depth:	30 m

Passavant® Sluice Gate

Opening dimensions W x H:	up to 3000 x 3500 mm
Pressure (on- /off-seating):	0.34 / 0.34 bar
Channel depth:	7.39 m

Passavant® Stop Plates

Opening dimensions W x H:	up to 5500 x 3000 mm
Pressure (on- /off-seating):	up to 0.4/ 0.4 bar
Channel depth:	7.39 m



Aqseptence Group GmbH
Water Processing Solutions

Product Line: Water Treatment

Passavant-Geiger-Strasse 1
65326 Aarbergen | Germany
Phone +49 6120 280
info.passavant@aqseptence.com
www.aqseptence.com

27.11.2020