



Noggerath® Compact Unit Combi 1400FF - Wastewater Treatment on the Island of Helgoland, Germany

Situation

The high seas island of Helgoland has had its own sewage treatment plant since the late 1980s, which was operated as a continuous flow reactor. The plant was no longer able to meet all requirements of a modern wastewater treatment plant and also had severe structural defects. In addition, large seasonal fluctuations have to be covered, as the island receives approx. 350,000 visitors per annum - mainly during the summer season. In 2019, after the clearance of explosive ordnance, the construction of the new wastewater treatment plant on the island of Helgoland began with a capacity of 6,150 PE. The mechanical pre-treatment has been realized by the Noggerath® Compact Unit. The pre-treatment was put into operation in December 2020.



Customer

Bremer Pro Aqua Wasser- u. Abwassertechnik GmbH

User

AZV Südholstein

Operator

Karl Meyer Inselentsorgung GmbH

Commissioning

December 2020

Delivery of the Noggerath®
Compact Unit Combi



Solution

The solution is the Noggerath® Compact Unit made of stainless steel, which has been installed above ground in modular design and covers all cleaning steps of a mechanical pre-treatment within one machine. 2 Passavant® Fine Screens with subsequent screenings treatment including dewatering and transport are installed on the grit trap. Due to a grit trap aeration, the grease enters the integrated grease trap and is collected separately. The sedimented grit is conveyed to a Noggerath® Grit Washer, which separates the organic matter from the grit, dewateres the grit and discharges it.

Technical Details

2 x Passavant® Fine Screens

Type:	Step Screens in redundant installation
Max. Flowrate:	50 l/s at 40% blinding per screen
Gap width:	3 mm

Noggerath® Screenings Wash Press

Type:	NWP 250
Dry substance of the treated screenings	35-45%.

Grit Trap walkable

Length:	5,200 mm
Width:	1,400 mm
Grit removal capacity:	50 l/s: 90% for particle size >0.2 mm

Grease Trap walkable

Length:	5,200 mm
Width:	400 mm with separate grease trap

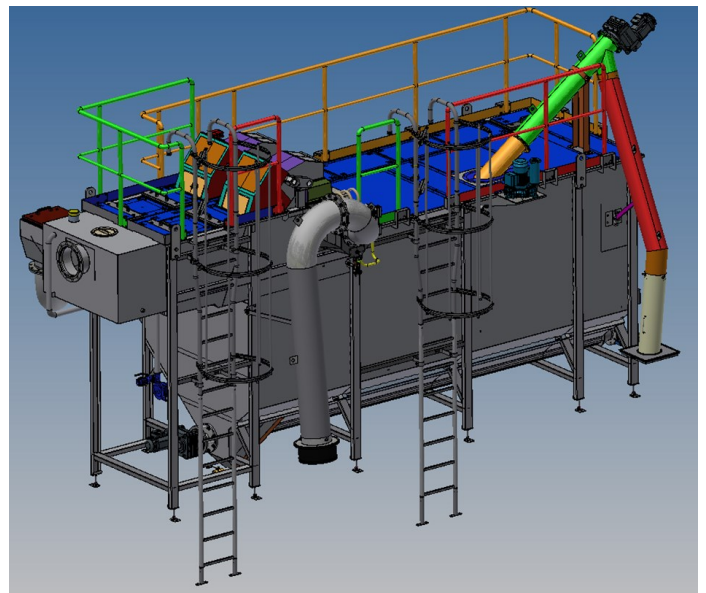
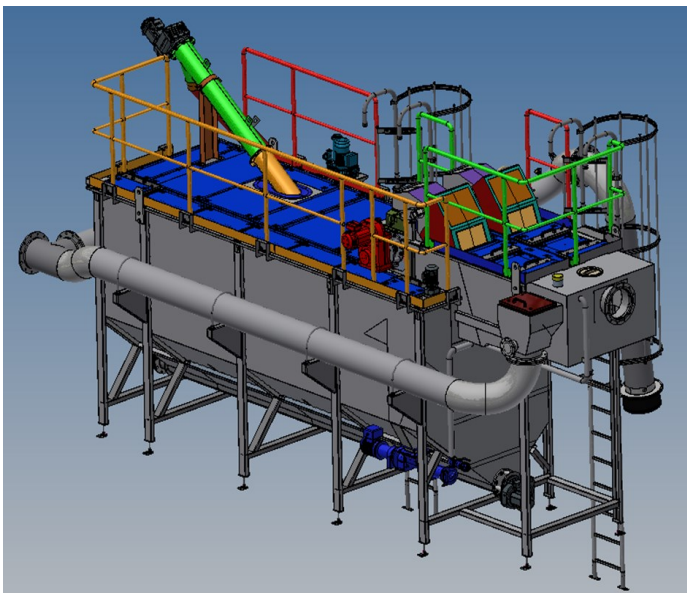
Noggerath® Grit Washer, dry fed

Type:	GW 400
Throughput capacity:	400 l/h washed grit
Loss on ignition < 3%, Dry matter content > 90%	

Overall dimensions of the Compact Unit

Length approx.:	7,900 mm
Width approx.:	2,450 mm
Height approx.:	4,350 mm
Total weight approx.:	4,660 kg
Operating weight approx.:	19,260 kg

Noggerath® Compact Unit Combi 1400FF with fine screening by 2 redundant Step Screens, screenings treatment, grit and grease separation with removal



Aqseptence Group
Water Processing Solutions

Product Line: Water Treatment

Ziegeleiweg 2
31675 Bueckeburg | Germany
Phone +49 5722 882 0
info.noggerath@aqseptence.com
www.aqseptence.com